

# **X12 837 Real-Time Claim Submission & Connectivity Specifications**

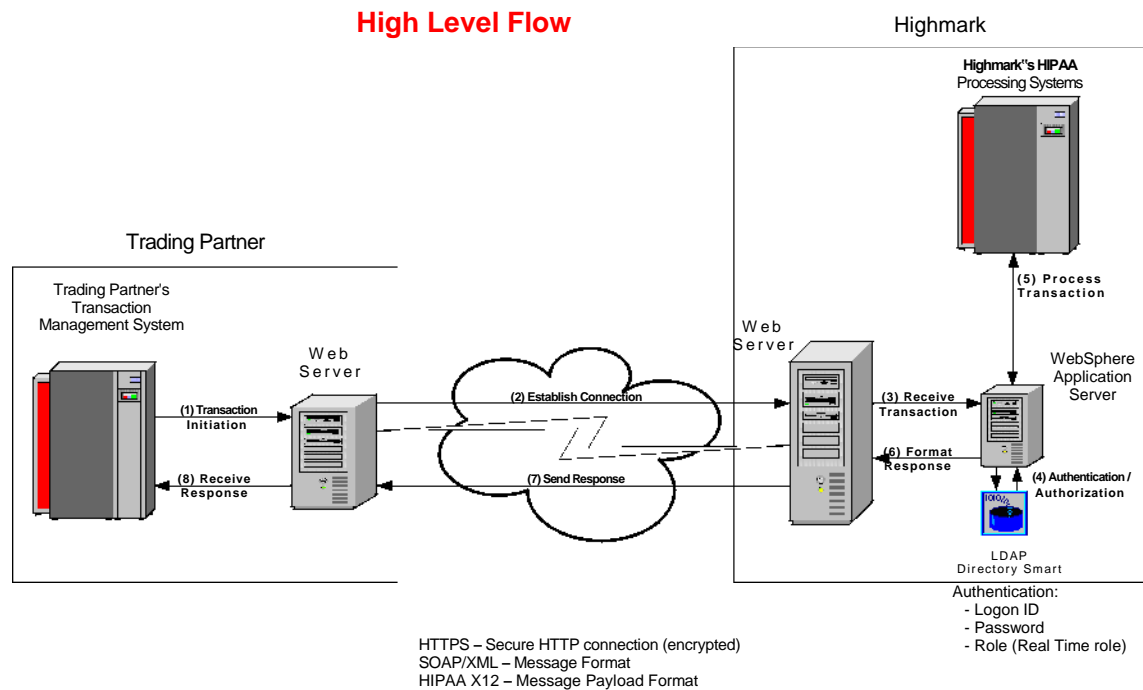
**Highmark, Inc.**  
**October 1, 2014**  
Document Version 1.1

# Contents

1. Real-Time Overview
2. Requirements
3. SOAP Messages
4. SOAP Faults
5. Highmark EDI WebServices Certificate

## 1. Overview

Real-time transactions utilize a CORE™-compliant Web Services Description Language (WSDL) Simple Object Access Protocol (SOAP). WSDL is a specification that describes networked XML-based services. SOAP is a simple XML based protocol to let applications exchange information over HTTP. Since the Internet is being utilized to transport the data, encryption will be utilized to secure messages in the same way financial transactions are secured over the Internet. Access to Highmark's networks will follow the same security model in place today, which requires a Login/Password.



**In order to understand the lifecycle of the transaction, processes have been outlined below:**

**A. Transaction Initiation**

Highmark Trading Partner's Transaction Management System will initiate a Realtime X12 HIPAA transaction.

**B. Establish Connection**

The Trading Partner's Transaction Management System will establish a secure Internet connection (HTTPS) to Highmark and send an encrypted SOAP message that contains a HIPAA X12 transaction payload, along with the Trading Partner logon id, and password assigned by Highmark.

**C. Receive Transaction**

Highmark receives the Real-time request on its Web Server.

**D. Authentication/Authorization**

When the SOAP message is received by Highmark's WebSphere application, the SOAP message will be validated and the Trading Partner's logon id, password and a defined role is authenticated using LDAP (Lightweight Directory Access Protocol). Only Trading Partners that have signed a Highmark Trading Partner Agreement are granted logon ids, passwords and defined role.

If the Trading Partner is not authorized to submit a Real-time request, the WebSphere application will return a SOAP invalid security/unauthorized message to the Trading Partner via the secure Internet connection (HTTPS).

**E. Process Transaction**

Trading Partners authorized to submit real time requests will have their transactions routed through the WebSphere application to the target system. The target system will generate the Real-time response.

**F. Format Response**

The WebSphere Application Server will envelope the response in a SOAP response message.

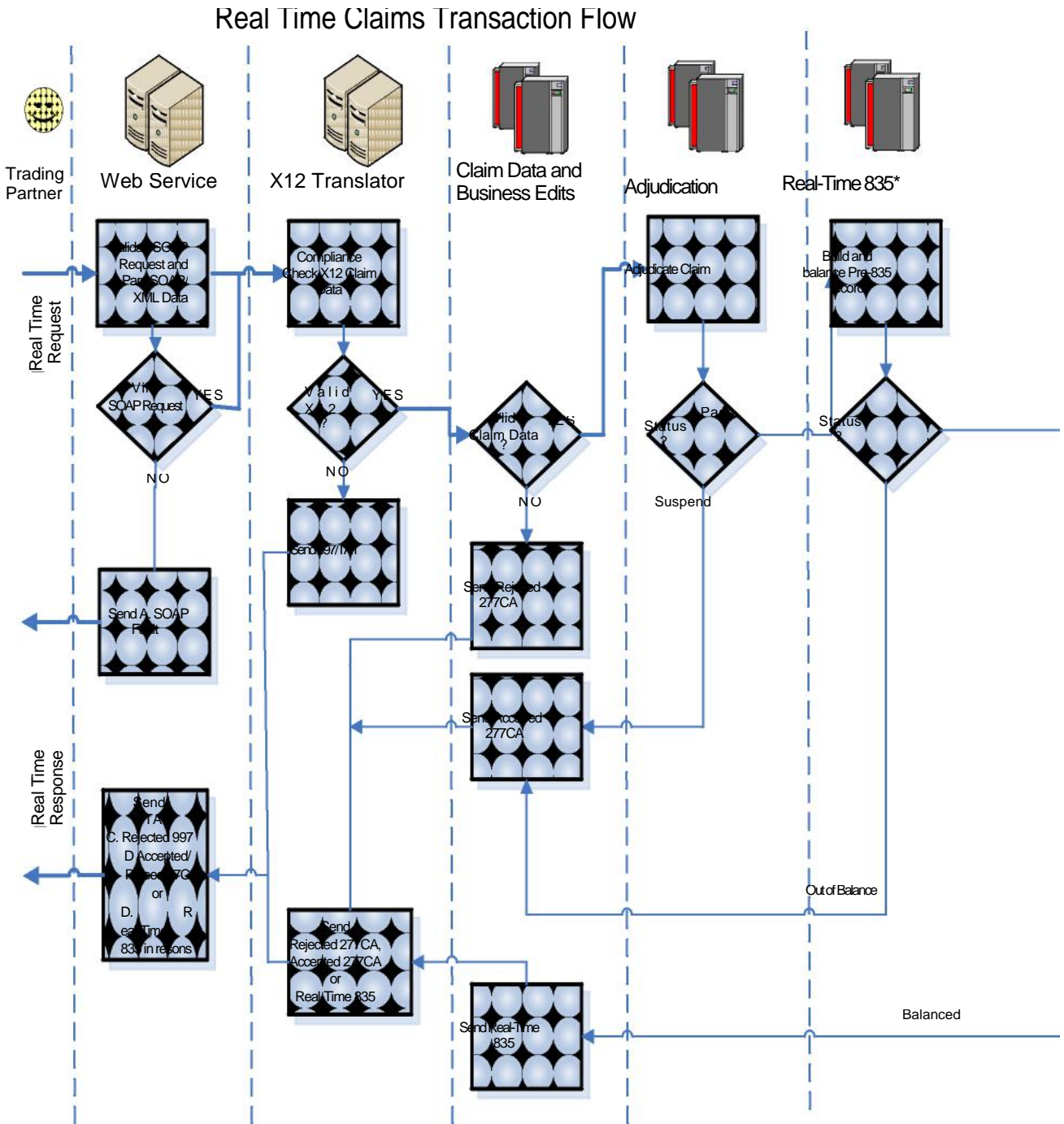
**G. Send Response**

The responses will be encrypted, and returned to the Trading Partner via the secure Internet (HTTPS) connection.

**H. Receive Response**

The Trading Partner's Web Server will return the response message to the Trading Partner's Transaction Management System that initiated the request.

# Real-Time Claim Adjudication/Estimation Transaction Flow:



\*Based on the type of Real-Time request indicated by the Trading Partner, the Real-Time 835 is resulting data from either a real claim adjudication or estimation

## 2. Connectivity Requirements for Real-Time Claims

- Trading Partners must submit claim transactions using HTTPS over a public line.
- Trading Partners must be able to connect to the following URLs to send either Demo or Production claims:
  - Trading Partners can connect to the following URL to demo their Connectivity and functionality in the Highmark production region. This URL will only accept Estimation requests and the claim will not be adjudicated in the Highmark production claims processing system. When using this URL the claims must be transmitted with the ISA15 value of "T".  
<https://services.highmark.com:8443/rtrpc/Core/demo/estimate>
  - Trading Partners must be able to connect to the following URL to send Production claims. This URL will accept both an Estimation of liability request, and an Adjudication request for payment. When using this URL a claim must be transmitted with the ISA15 value of "P".  
<https://services.highmark.com:8443/rtrpc/Core/estimate>  
<https://services.highmark.com:8443/rtrpc/Core/adjudicate>
- Trading Partner must ensure that only authorized persons and/or applications will be able to submit requests to Highmark with their "logon ID" and password.
- Highmark Real-Time transactions (Request and Response) are based on standard SOAP 1.2 formats (see the SOAP 1.2 specification at <http://www.w3.org/TR/soap12-part1/> for details of the SOAP 1.2 standards).
  - You can obtain the WSDL files to create your SOAP messages by downloading them from the following URL:  
<https://services.highmark.com/rtrpc/wsdl/core/2.2.0/CORERule2.2.0.wsdl>

**\*Note** – Trading Partners will need to add the SOAP header to the SOAP message.

The **HTTP protocol header** must contain the following required properties for all Highmark Real-Time transactions:

- **Content-Type** = "application/soap+xml;action="RealTimeTransaction"

The **SOAP message header** must contain the following required data elements for all Highmark Real-Time transactions:

- **Username** = (7 positions, Upper Case) Highmark assigned login id.
- **Password** = (8 positions) Highmark assigned password.

**NOTE:** Following are key points to consider regarding the handling of CORE™ Envelope Metadata. They are not intended to be all inclusive. **For additional information, please refer to Phasell CORE™ 270: Connectivity Rule, Table 4.4.2 - Table of CORE™ Envelope Metadata.** (see <http://www.cagh.org/pdf/CLEAN5010/270-v5010.pdf> )

The **SOAP message body** must contain the following required data elements for all Highmark Real-Time transactions:

- **PayloadType (Requests)**

*Highmark expects the following values in **PayloadType** on Real-Time transactions:*

- 'X12\_837\_Request\_005010X223A1\_2' (837 Institutional Claim)
- 'X12\_837\_Request\_005010X222A1' (837 Professional Claim)
- 'X12\_837\_Request\_005010222' (837 Professional Claim)

- **PayloadType (Responses)**

*Highmark will return the following values in **PayloadType** on Real-Time Response transactions:*

- 'X12\_277CA\_Response' (277 Claim Acknowledgment) – (not a CORE enumerated value, Highmark will deliver version 005010X214 of the 277CA in the actual Payload)
- 'X12\_TA1\_Response\_005010X231A1' (TA1 Interchange Acknowledgement)
- 'X12\_999\_Response\_005010X231A1' (999 Functional Acknowledgement)
- 'X12\_835\_Response\_005010X221A1' (Electronic Remittance Advice)
- 'CoreEnvelopeError'

- **ProcessingMode** = 'RealTime'

- **PayloadID** = Trading Partner defined. Unique within the domain from the domain of the party that sets this value. PayloadID is a payload identifier assigned by the Sender in the Real Time processing mode.

- **TimeStamp** = XMLSchema dateTime representation;
  - See <http://www.w3.org/TR/xmlschema11-2/#dateTime>  
**Includes CORETM-compliant restrictions:**
    - Year must be four (4) digits
    - Must include a “time zone offset”
  
- **SenderID** = (7 position, Upper Case) Highmark assigned login id. Must be same value as Username in the SOAP Header.
  
- **ReceiverID** = Receiver plan NAIC Code. Must be one of the following values:

‘54771’ (Highmark)

‘00070’ (Highmark – Delaware, Institutional)

‘00570’ (Highmark – Delaware, Professional)

‘54828’ (Highmark – West Virginia)

‘71768’ (Highmark Health Insurance Co.)

‘15459’ (Highmark Senior Solutions Co.) – WV

‘15460’ (Highmark Senior Health Co.) – PA

Note: “54771” is used as the NAIC code in all sample messages within this document

- **CORERuleVersion** = '2.2.0'
  
- **Payload** = The Payload must be embedded using the Inline method (using CDATA element as shown in the examples below), except when sending or receiving payloads which contain non-printable characters, e.g., separator characters in an ASC X12 Interchange payload, the payload must be Base64 encoded.

- The Trading Partner must use a „~“ as the segment terminator, the '{' as the repetition separator, the „^“ element delimiter and the „:“ Component Element Separator.
- The Trading Partner must include a prefix of “R” along with their sender Highmark assigned Trading Partner number in the data element GS02 of the X-12 837 file.
- The “Payload” tag in the SOAP body can only contain a single claim with no more than 50 lines of service. Multiple claims cannot be processed through the Real-Time process.
- The Trading Partner will be responsible to evaluate the response returned, and to resubmit the request with corrections required as indicated by the SOAP fault.
- No XML exception characters (&, <, >, “) or non-printable characters will be used as a delimiter or contained within the data of the message.

## **DISCLAIMER**

**Real-time claim transactions are designed to respond to individual end-user claim requests. For typical requests, the average response time should be within 30 seconds. Actual response time will be dependent upon Real-time transaction activity. Batched claim requests will receive rejected 999s.**



### 3. SOAP REQUEST MESSAGES – The following are models of valid Highmark Real-time transactions (Request and Response) with properly formatted SOAP envelopes.

#### Sample 5010A1 837 Request Message:

```
<soap:Envelope xmlns:soap="http://www.w3.org/2003/05/soap-envelope"
xmlns:cor="http://www.cagh.org/SOAP/WSDL/CORERule2.2.0.xsd">
<soap:Header>
  <wss:Security xmlns:wss="http://docs.oasis-open.org/wss/2004/01/oasis-
200401-wss-wssecurity-secext-
1.0.xsd">
    <wss:UsernameToken>
      <wss:Username>V999999</wss:Username>
      <wss:Password>xxxxxxxx</wss:Password>
    </wss:UsernameToken>
  </wss:Security>
</soap:Header>
<soap:Body>
  <cor:COREEnvelopeRealTimeRequest>
    <PayloadType>X12_837_Request_005010X222A1</PayloadType>
    <ProcessingMode>RealTime</ProcessingMode>
    <PayloadID>f81d4fae-7dec-11d0-a765-00a0c91e6bf6</PayloadID>
    <TimeStamp>2007-08-30T10:20:34Z</TimeStamp>
    <SenderID>V999999</SenderID>
    <ReceiverID>54771</ReceiverID>
    <CORERuleVersion>2.2.0</CORERuleVersion>
    <Payload><![CDATA[ISA^00^00^
      ^ZZ^EDIR403          ^33^54771~
      ^110125^2111^|^00501^000007201^1^P^:~
      GS^HC^R499952^54771^20110125^2111^7201^X^005010X2
      22A1~
      ST^837^000007201^005010X222A1~
      BHT^0019^00^000007201^20110125^2111^CH~
      NM1^41^2^TEST SUBMITTER^^^^46^999999~
      PER^IC^CONTACT NAME^TE^8881231234~
      NM1^40^2^HIGHMARK^^^^46^54771~
      HL^1^^20^1~
      PRV^BI^PXC^9999999999~
      NM1^85^2^TEST PROVIDER^^^^XX^9999999999~
      N3^42 SOUTH QUEEN STREET^SUITE 101B~
      N4^CAMP HILL^PA^174034628~
      REF^EI^9999999999~
      HL^2^1^22^0~
      SBR^P^18^9999999999^^^^BL~
      NM1^IL^1^GEN2^JANE^R^^MI^SDR9999999999~
      N3^48 SAMPLE DRIVE^APT 219~
      N4^CAMP HILL^PA^151020000~
      DMG^D8^18120516^F~
      NM1^PR^2^HIGHMARK^^^^PI^54771~
      N4^PITTSBURGH^PA^152223099~
```

```

CLM^DD^123^^^11:B:1^Y^A^Y^Y~
REF^D9^9999~
HI^BK:9999~
NM1^82^2^DOE,JANE^^^^^XX^9999999999~
LX^1~
SV1^HC:J9999:25:::NOTE^123^UN^1^11^^1~
DTP^472^D8^20101222~
REF^6R^5379-1~
SE^28^000007201~
GE^1^7201~
IEA^1^000007201~]></Payload>
</cor:COREnvelopeRealTimeRequest>
</soap:Body>
</soapenv:Envelope>

```

**4. SOAP RESPONSE MESSAGES** – The following are examples of valid Highmark Real-Time claim response transactions with properly formatted SOAP envelopes.

**Sample 5010A1 837 Response Message:**

```

<soapenv:Envelope xmlns:soapenv="http://www.w3.org/2003/05/soap-envelope"
xmlns:cor="http://www.caqh.org/SOAP/WSDL/CORERule2.2.0.xsd">
  <soapenv:Body>
    <cor:COREnvelopeRealTimeResponse>
      <PayloadType>X12_277CA_Response</PayloadType>
      <ProcessingMode>RealTime</ProcessingMode>
      <!--PayloadID from request, when available-->
      <PayloadID>a81d44ae-7dec-11d0-a765-00a0c91e6ba0</PayloadID>
      <TimeStamp>2007-08-30T10:20:34Z</TimeStamp>
      <!-- NAIC code of the response sender (the receiver ID from the
request) -->
      <SenderID>54771</SenderID>
      <!-- The login ID of the response receiver (the sender ID from the
request) -->
      <ReceiverID>V9999999</ReceiverID>
      <CORERuleVersion>2.2.0</CORERuleVersion>
      <Payload>><![CDATA[ISA^00^ ^00^ ^33^54771 ^ZZ^EDIR403~
^110210^1313^{^00501^0000000000^0^P^}>~
GS^HN^54771C^R1001548^20110210^13132902^1^X^005010X214~
ST^277^0354111E0^005010X214~
BHT^0085^08^44445^20110210^13132902^TH~
HL^1^^20^1~
NM1^PR^2^HIGHMARK^^^^^PI^54771~
TRN^1^44445~
DTP^050^D8^20110210~

```

```

DTP^009^D8^20110210~
HL^2^1^21^1~
NM1^41^2^BMA OF OAKHILL^^^^^46^1001548~
TRN^2^44445~
STC^A1>19>PR^20110210^WQ^4995~
QTY^AA^1~
AMT^YY^4995~
HL^3^2^19^1~
NM1^85^2^BMA OF OAKHILL^^^^^XX^9999999999~
HL^4^3^PT~
NM1^QC^1^DOE^JOHN^C^^^MI^XYP9999999999~
TRN^2^12345656~
STC^A3>247^20110210^U^4995~
STC^A8>153>40^20110210^U^4995^^^^^A8>153>PR~
STC^A8>496>41^20110210^U^4995^^^^^A8>562>85~
STC^A8>116>85^20110210^U^4995^^^^^A8>501>85~
STC^A7>229^20110210^U^4995~
REF^D9^J98UU321~
DTP^472^RD8^20090701-20090709~
SVC^HC>25000>25>26>51>52^4995^^0300^^^1~
STC^A7>479^^U~
STC^A7>672^^U~
REF^FJ^1~
REF^XZ^123456~
DTP^472^RD8^20090701-20090709~
SE^32^0354111E0~
GE^1^1~
IEA^1^000000000~]]></Payload>
<ErrorCode>Success</ErrorCode>
<ErrorMessage>NA</ErrorMessage>
</cor:CORREnvelopeRealTimeResponse>
</soapenv:Body>
</soapenv:Envelope>

```

**A. SOAP Faults** – When a Real-Time transaction fails validation for the *format* of the SOAP message, or a system error occurs, the following error codes will be used when responding to the Trading Partner.

*NOTE: All SOAP Faults will return a 500 HTTP Status Code*

Fault Code	Fault Reason Text	Comments
Sender	A detailed message about what was wrong with the request SOAP message.	SOAP Request needs to be corrected and resubmitted.

Receiver	Could Not Respond	Highmark's systems could not respond due to an error or a time out. Request can be resubmitted later.
Receiver	Real Time Not Available	Highmark's real-time systems are down for scheduled maintenance. Request can be submitted again later.
Version Mismatch		Request SOAP message is using the wrong version of SOAP. SOAP Request needs to be corrected and resubmitted.

**An example of a WSDL SOAP Receiver Fault response with PayloadID:**

```
<soapenv:Envelope xmlns:soapenv="http://www.w3.org/2003/05/soap-envelope">
  <soapenv:Body>
    <soapenv:Fault>
      <soapenv:Code>
        <soapenv:Value>soapenv:Receiver</soapenv:Value>
      </soapenv:Code>
      <soapenv:Reason>
        <soapenv:Text xml:lang="en-US">Could Not Respond</soapenv:Text>
      </soapenv:Reason>
      <soapenv:Detail>
        <!-- The PayloadID from the request -->
        <PayloadID>f81d4fae-7dec-11d0-a765-00a0c91e6bf6</PayloadID>
      </soapenv:Detail>
    </soapenv:Fault>
  </soapenv:Body>
</soapenv:Envelope>
```

**An example of a WSDL SOAP Sender Fault response with PayloadID:**

```
<soapenv:Envelope xmlns:soapenv="http://www.w3.org/2003/05/soap-envelope">
  <soapenv:Body>
    <soapenv:Fault>
      <soapenv:Code>
        <soapenv:Value>soapenv:Sender</soapenv:Value>
      </soapenv:Code>
      <soapenv:Reason>
        <soapenv:Text> SP-ERR-001 - Client request message schema
        validation failure - 2013-08-29T12:14:14-04:00: -particle 3.1: in
        element
        {http://www.caqh.org/SOAP/WSDL/CORERule2.2.0.xsd}COREEnvelopeRealT
        imeRequest with anonymous type, found <ProcessingMode> (in
        default namespace) ), but next item should be
        PayloadType</soapenv:Text>
      </soapenv:Reason>
    </soapenv:Fault>
  </soapenv:Body>
</soapenv:Envelope>
```

```

        </soapenv:Reason>
        <soapenv:Detail>
            <!-- The PayloadID from the request -->
            <PayloadID>f81d4fae-7dec-11d0-a765-00a0c91e6bf6</PayloadID>
        </soapenv:Detail>
    </soapenv:Fault>
</soapenv:Body>
</soapenv:Envelope>

```

**I. CORE-Compliant Error Responses** – When a Real-Time transaction fails validation for the format or content of the SOAP message, a CORE-compliant SOAP response message will be sent to the Trading Partner. The following error codes are those which are not defined by the CORE Phase II 270 Connectivity Rule, Section 4.3.3.2:

Error Code	Error Message	Comments
PayloadTypeNotSupported	Payload <i>#{PayloadType}</i> Not Supported	A CORE-enumerated payload type was submitted, but it is not supported by this service.
UsernameSenderIdMismatch	Username must match SenderId	The Username in the SOAP header and the SenderID in the SOAP body were not the same value.
ReceiverIDNotSupported	Receiver ID <i>#{ReceiverID}</i> Not Supported	The value of the ReceiverID field was not one of the supported Receiver ID NAIC plan codes listed above.
IllegalOperation	Illegal operation <i>#{Operation}</i> requested for URL <i>#{URL}</i>	The requested operation (“adjudicate” or “estimate”) was not valid for the requested URL (see <b>Connectivity Requirements for Real Time Claims</b> above)

**An example of a CORE-Compliant Error Response:**

```

<soapenv:Envelope xmlns:soapenv="http://www.w3.org/2003/05/soap-envelope"
xmlns:cor="http://www.caqh.org/SOAP/WSDL/CORERule2.2.0.xsd">
    <soapenv:Body>
        <cor:COREEnvelopeRealTimeResponse>
            <PayloadType>Core_Envelope_Error</PayloadType>
            <ProcessingMode>RealTime</ProcessingMode>
            <!--PayloadID from request, when available-->
            <PayloadID>a81d44ae-7dec-11d0-a765-00a0c91e6ba0</PayloadID>
            <TimeStamp>2007-08-30T10:20:34Z</TimeStamp>
            <!-- NAIC code of the response sender (the receiver ID from the

```

```

request) -->
<SenderID>54771</SenderID>
<!-- The login ID of the response receiver (the sender ID from the
request) -->
<ReceiverID>V999999</ReceiverID>
<CORERuleVersion>2.2.0</CORERuleVersion>
<!--Note that there is no Payload when the response PayloadType is
Core_Envelope_Error-->
<ErrorCode>PayloadTypeIllegal</ErrorCode> <!--Just one of many
possible error codes-->
<ErrorMessage>Illegal value for PayloadType</ErrorMessage>
</cor:COREEnvelopeRealTimeResponse>
</soapenv:Body>
</soapenv:Envelope>

```

## B. Rejected TA1

The ASC X12 Interchange Acknowledgment, or TA1, provides the sender a negative confirmation of the interchange control envelopes of the EDI file transmission. If the interchange envelopes (header and trailer) are invalid (i.e. the data is corrupt or the trading partner relationship does not exist) the edit will reject and a TA1, along with the data, will be returned. The entire transmission is rejected at the header level.

### Sample 5010 TA1 Response Message

```

<soapenv:Envelope xmlns:soapenv="http://www.w3.org/2003/05/soap-envelope"
xmlns:cor="http://www.caqh.org/SOAP/WSDL/CORERule2.2.0.xsd">
  <soapenv:Body>
    <cor:COREEnvelopeRealTimeResponse>
      <PayloadType>X12_TA1_Response_00501X1231A1</PayloadType>
      <ProcessingMode>RealTime</ProcessingMode>
      <!--PayloadID from request, when available-->
      <PayloadID>a81d44ae-7dec-11d0-a765-00a0c91e6ba0</PayloadID>
      <TimeStamp>2007-08-30T10:20:34Z</TimeStamp>
      <!-- NAIC code of the response sender (the receiver ID from the
request) -->
      <SenderID>54771</SenderID>
      <!-- The login ID of the response receiver (the sender ID from the
request) -->
      <ReceiverID>V999999</ReceiverID>
      <CORERuleVersion>2.2.0</CORERuleVersion>
      <Payload><<![CDATA[ISA^00^      ^00^ ^33^54771 ^ZZ^EDIR403
^110127^1338^{^00501^000000001^0^P^:~
TA1^517200002^110127^1338^R^020~
IEA^0^517200002~]]>></Payload>
      <ErrorCode>Success</ErrorCode>
      <ErrorMessage>NA</ErrorMessage>
    </cor:COREEnvelopeRealTimeResponse>
  </soapenv:Body>
</soapenv:Envelope>

```

```
</cor:COREEnvelopeRealTimeResponse>  
</soapenv:Body>  
</soapenv:Envelope>
```

### C. Rejected Rejected 999

The ASC X12 999, or Functional Acknowledgment, provides the sender negative confirmation of the structure of the ASC X12N 5010 837P/I EDI file. If the EDI file contained syntactical errors, the segment(s) and element(s) where the error(s) occurred may be reported.

```
<soapenv:Envelope xmlns:soapenv="http://www.w3.org/2003/05/soap-envelope"
xmlns:cor="http://www.caqh.org/SOAP/WSDL/CORERule2.2.0.xsd">
  <soapenv:Body>
    <cor:COREEnvelopeRealTimeResponse>
      <PayloadType>X12_999_Response_005010X231A1</PayloadType>
      <ProcessingMode>RealTime</ProcessingMode>
      <!--PayloadID from request, when available-->
      <PayloadID>a81d44ae-7dec-11d0-a765-00a0c91e6ba0</PayloadID>
      <TimeStamp>2007-08-30T10:20:34Z</TimeStamp>
      <!-- NAIC code of the response sender (the receiver ID from the
request) -->
      <SenderID>54771</SenderID>
      <!-- The login ID of the response receiver (the sender ID from the
request) -->
      <ReceiverID>V9999999</ReceiverID>
      <CORERuleVersion>2.2.0</CORERuleVersion>
      <Payload><<![CDATA ISA^00^      ^00^      ^33^54771      ^ZZ^V107897
^110208^1308^{^00501^000000001^0^P^>
GS^FA^54771^R1000923^20110208^130841^1^X^005010X231A1
ST^999^0001^005010X231
AK1^HR^212^005010X212
AK2^276^276LP38^005010X212
IK3^NM1^8^2100^8
IK4^4^1036^7^CROZER CHESTER MED CTR CROZER CHEST
IK5^R^5
AK9^R^1^1^0
SE^8^0001
GE^1^1
IEA^1^000000001]]></Payload><ErrorCode>Success</ErrorCode>
      <ErrorMessage>NA</ErrorMessage>
    </cor:COREEnvelopeRealTimeResponse>
  </soapenv:Body>
</soapenv:Envelope>
```



## D. Accepted/Rejected 277CA (Claim Acknowledgement)

The 277 Claim Acknowledgment (277CA) transaction is used to return a reply of “accepted” or “not accepted” for claims or estimates submitted via the 837P/I transaction. Acceptance at this level is based on 837P/I Implementation Guides and Highmark’s front-end edits.

### Sample 5010 277 Response Message

```
<soapenv:Envelope xmlns:soapenv="http://www.w3.org/2003/05/soap-envelope"
xmlns:cor="http://www.caqh.org/SOAP/WSDL/CORERule2.2.0.xsd">
  <soapenv:Body>
    <cor:COREEnvelopeRealTimeResponse>
      <PayloadType>X12_277CA_Response</PayloadType>
      <ProcessingMode>RealTime</ProcessingMode>
      <!--PayloadID from request, when available-->
      <PayloadID>a81d44ae-7dec-11d0-a765-00a0c91e6ba0</PayloadID>
      <TimeStamp>2007-08-30T10:20:34Z</TimeStamp>
      <!-- NAIC code of the response sender (the receiver ID from the
request) -->
      <SenderID>54771</SenderID>
      <!-- The login ID of the response receiver (the sender ID from the
request) -->
      <ReceiverID>V999999</ReceiverID>
      <CORERuleVersion>2.2.0</CORERuleVersion>
      <Payload><<![CDATA ISA^00^ ^00^ ^33^54771 ^ZZ^EDIR403
^110210^1313^{^00501^000000000^0^P^}>~
GS^HN^54771C^R1001548^20110210^13132902^1^X^005010X214~
ST^277^0354111E0^005010X214~
BHT^0085^08^44445^20110210^13132902^TH~
HL^1^20^1~
NM1^PR^2^HIGHMARK^^^^PI^54771~
TRN^1^44445~
DTP^050^D8^20110210~
DTP^009^D8^20110210~
HL^2^1^21^1~
NM1^41^2^BMA OF OAKHILL^^^^46^1001548~
TRN^2^44445~
STC^A1>19>PR^20110210^WQ^4995~
QTY^AA^1~
AMT^YY^4995~
HL^3^2^19^1~
NM1^85^2^BMA OF OAKHILL^^^^XX^9999999999~
HL^4^3^PT~
NM1^QC^1^DOE^JOHN^C^^^^MI^XYP9999999999~
TRN^2^12345656~
STC^A3>247^20110210^U^4995~
STC^A8>153>40^20110210^U^4995^^^^A8>153>PR~
STC^A8>496>41^20110210^U^4995^^^^A8>562>85~
STC^A8>116>85^20110210^U^4995^^^^A8>501>85~
STC^A7>229^20110210^U^4995~
REF^D9^J98UU321~
DTP^472^RD8^20090701-20090709~
SVC^HC>25000>25>26>51>52^4995^^0300^^1~
```

```
STC^A7>479^U~
STC^A7>672^U~
REF^FJ^1~
REF^XZ^123456~
DTP^472^RD8^20090701-20090709~
SE^32^0354111E0~
GE^1^1~
IEA^1^000000000~]]></Payload><ErrorCode>Success</ErrorCode>
  <ErrorMessage>NA</ErrorMessage>
</cor:CORREnvelopeRealTimeResponse>
</soapenv:Body>
</soapenv:Envelope>
```

NOTE: A “good” (non-SOAP fault) SOAP response message will send an HTTP return code of 2xx (see SOAP 1.1 specification, section 6.2)

### **E. Real-Time 835 Response**

The Real-Time 835 response will be based on the ASC X12N 835 Transaction adopted under the HIPAA Administrative Simplification Electronic Transaction rule. The Real-Time 835 will contain the results from a successful estimation request or claim adjudication (without the actual payment/check information). Estimation requests will not result in claim payment.

### Sample 5010 835 Response

```
<soapenv:Envelope xmlns:soapenv="http://www.w3.org/2003/05/soap-envelope"
xmlns:cor="http://www.cagh.org/SOAP/WSDL/CORERule2.2.0.xsd">
  <soapenv:Body>
    <cor:COREEnvelopeRealTimeResponse>
      <PayloadType>X12_835_Response_005010X221A1</PayloadType>
      <ProcessingMode>RealTime</ProcessingMode>
      <!-- PayloadID from request, when available-->
      <PayloadID>a81d44ae-7dec-11d0-a765-00a0c91e6ba0</PayloadID>
      <TimeStamp>2007-08-30T10:20:34Z</TimeStamp>
      <!-- NAIC code of the response sender (the receiver ID from the
      request) -->
      <SenderID>54771</SenderID>
      <!-- The login ID of the response receiver (the sender ID from the
      request) -->
      <ReceiverID>V999999</ReceiverID>
    <CORERuleVersion>2.2.0</CORERuleVersion><Payload><![CDATA[ ISA^00^ ^00^
      ^33^54771
      ^ZZ^EDIR403~^110216^1019^{^00501^517200014^0^P^}>~GS^HP^54771^R499952^20110216^
      10191439^517200988^X^005010X221A1~ST^835^0001~BPR^H^0^C^ANON^20110216~
      TRN^1^5470358843^1231294723~REF^EV^499952~DTM^405^20110216~N1^PR^HIGHMARK BLUE
      SHIELD~N3^1800 CENTER STREET~N4^CAMP
      HILL^PA^170890089~REF^NF^54771~PER^CX^TE^8669755054~PER^BL^HIGHMARK
      54771^TE^999999999~N1^PE^ FAMILY PRACTICE^FI^999999999~N3^PO BOX
      1234~N4^YORK^PA^176048169~LX^1~CLP^CHRIS^25^170^0^170^12^9999999999^11~NM1^QC^1^DO
      E^JOHN^L^MI^9999999999~NM1^IL^1^DOE^JANE^LOU^MI^9999999999~NM1^74^1^LAST^F
      AIRY~NM1^82^1^XX^999999999~MOA^N506~REF^CE^I3 INCREDIBLE
      PPO~DTM^050^20110216~SVC^HC>99999^170^0~DTM^472^20101222~CAS^PR^31^170~REF^6R^HBFP
      00018000002~SE^28^0001~GE^1^517200988~IEA^1^517200014~ ] ]></Payload><ErrorCode>Succ
      ess</ErrorCode>
      <ErrorMessage>NA</ErrorMessage>
    </cor:COREEnvelopeRealTimeResponse>
  </soapenv:Body>
</soapenv:Envelope>
```

## 5.Highmark EDI WebServices Certificate

This Section will explain how to save to a file the certificate used by the Highmark Web Services Gateway. Highmark offers the use of web services to perform EDI transactions. Since these transactions require the utmost security, all data is encrypted and transmitted over Secure Sockets Layer Protocol (SSL). This section will provide some links to information about SSL and instructions for downloading to a file, the Highmark certificate that would be required to be setup as a Truststore to establish a SSL connection with the web services gateway server. Note: This document is meant for individuals whom have information technology experience and an understanding of SSL and web services.

### A. Introduction

Prior to obtaining the Highmark Public Certificate for the enablement of the EDI web services one should have an understanding of SSL. Here's a link to a SSL Introduction.

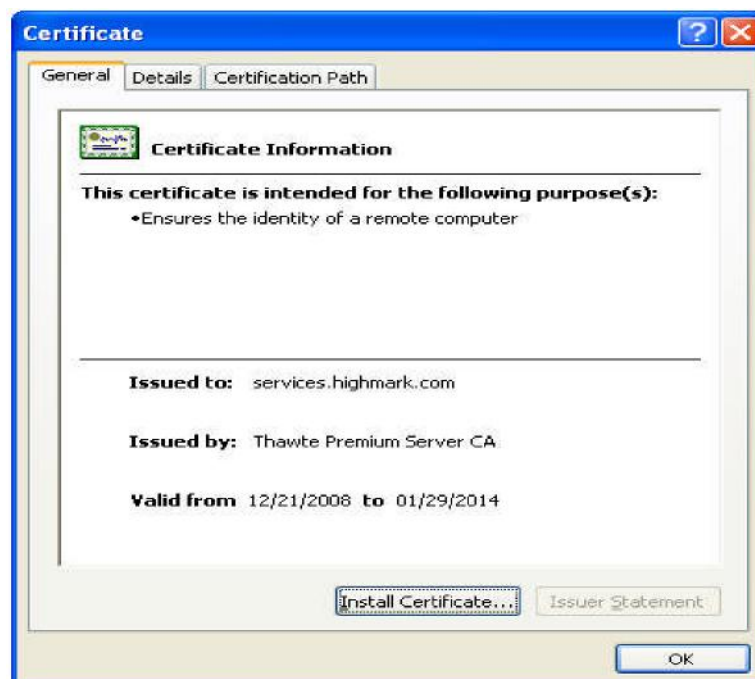
*These instructions are for Windows Internet Explorer 7 and may vary with other versions.*

### [Introduction to SSL](#)

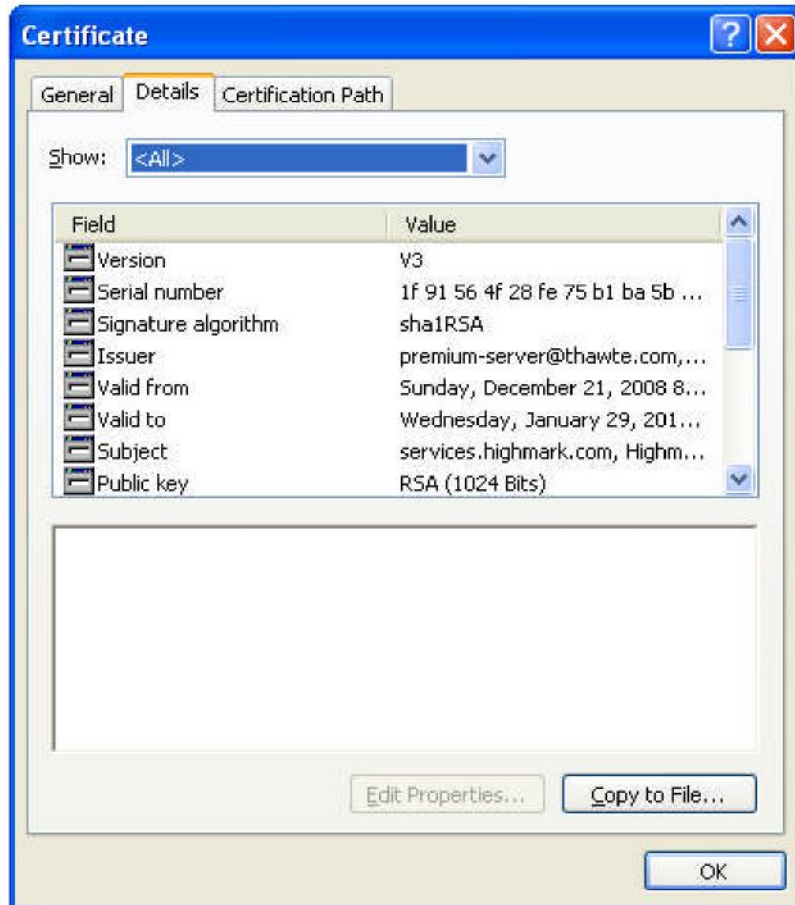
### B. Downloading the Digital Certificate.

First, open a web browser to the <https://services.highmark.com> home page, click on the gold "LOCK" icon in your Windows Internet Explorer Browser. Choose "View Certificates."

Next, you'll see the Certificate Window which displays the general information about the Certificate.



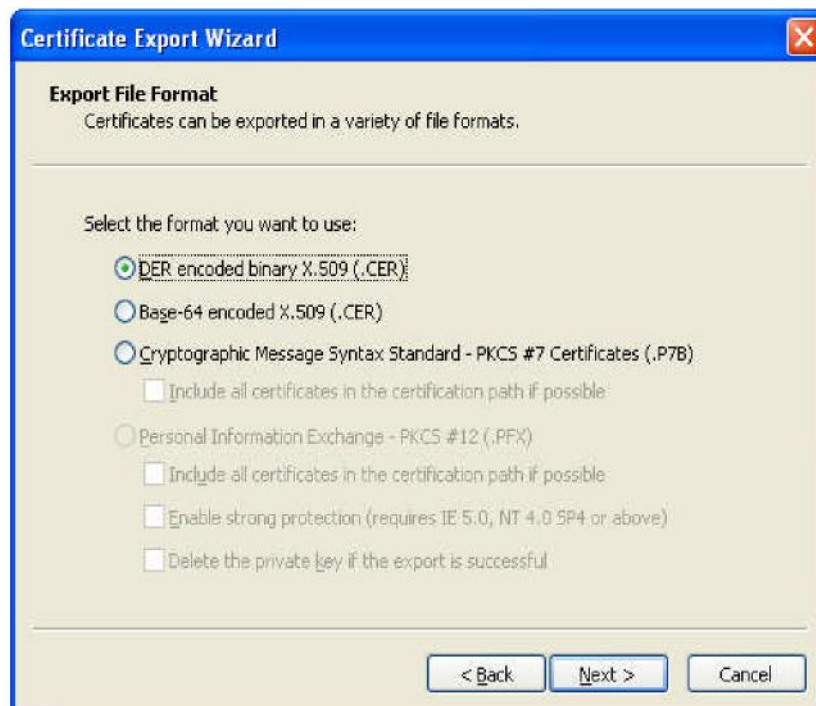
If you click the details tab, it will show the detailed information about the certificate. This certificate is signed by the certificate authority.



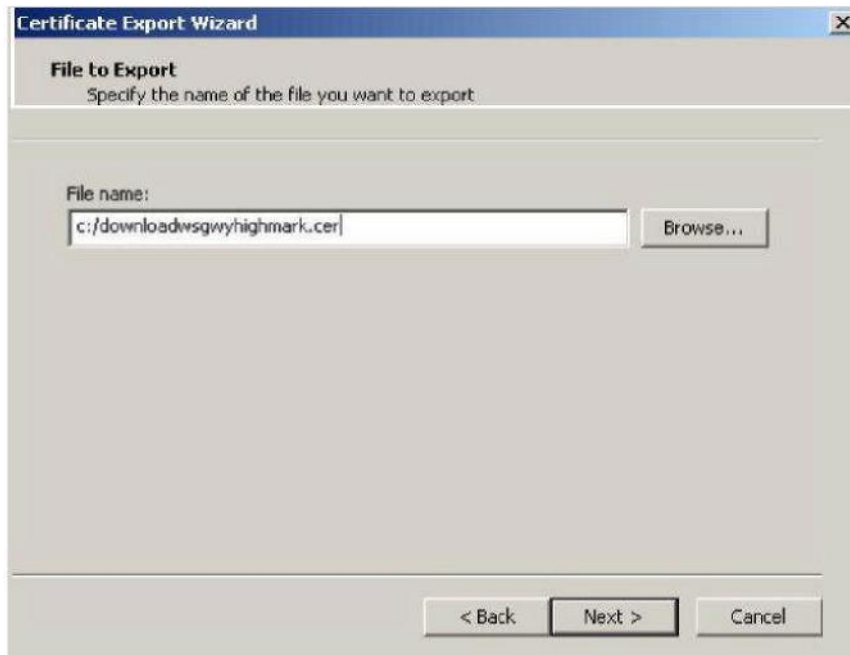
To retrieve the certificate, click the Copy to File...' button on the General tab. You should now see the Welcome window for the Certificate Export Wizard for windows. Select the Next Button.



Select the File Format. In this example, the default DER encoded binary X.509 is selected. Click Next.



Enter the file name to save the certificate under. In this example [C:/downloadwsgwyhighmark.cer](#) was used. Click Next.



Select Finish Button...



### C. What to do next...

In order to establish a SSL connection via a web services client usually one needs to load the certificate to the "Truststore" file configured for the client's platform in which the web service will be invoked. Since, there are too many web services client platforms to mention in this guide, one will need to review the documentation associated with the web services client platform. For example, to obtain information for a client platform like IBM's WebSphere Application Server one could perform a search on Google ([www.google.com](http://www.google.com)) for: "IBM websphere Truststore how to" or examine the Websphere Information Center Documentation.

### D. Renewing the Certificate

Digital Certificates have a specific expiration date and will need to be renewed. In the example below the **General Tab** identifies the **Valid To and From dates** for the Certificate. Each Real-Time Trading Partner will receive an email 4 weeks before the certificate expires. (Note: Email addresses should be supplied by the EDI Trading Partner upon applying for Real-Time access.) The email will include the date the new certificate will be available for download and the date the new certificate will be activated. Repeat the above steps to incorporate the renewed certificate in your application.

